



Edition 10
May
2026

GEOGRAPHY

Curriculum Newsletter

YEAR 10

Contact

 Brooke Fields
WPT Geography Subject
Director
bfields@cliftonschoo.org



Curriculum Intent

At Wickersley Partnership Trust we understand that getting the curriculum right for each and every individual student is the single most important factor in ensuring progress, encouraging positive engagement and raising aspirations.

We want all students to leave able and qualified to play their full part in an ever-changing world through an ambitious, creative and innovative curriculum, which empowers students with the skills, knowledge and attributes to allow them to succeed in their next phase of education and their working life.

The Geography curriculum is designed to develop curiosity about the world and its people to unlock the key to their future.

Year 10 Curriculum

Students have studied a range of difference topics so far in Year 10. Click the topics below to explore.

Natural and Tectonic Hazards

In this section of the specification, students study the processes that create hazards, why students pose risks to people and how to reduce the effects of hazards.

Changing Economic World

In this section of the specification, students study the rapid economic development of Nigeria and the changing economic future of the UK.

Living World

In this section of the specification, students study the characteristics of ecosystems such as tropical rainforests and deserts. Students explore threats to these ecosystems and how best to manage them. Students focus on the Thar Desert and the Malaysian rainforest in particular.

Urban Fieldwork

In this section, of the specification, students apply their knowledge and skills of the enquiry process to investigate the sustainability of regeneration in Sheffield city centre.

Physical Landscapes

In this section of the specification, students study key processes and features of physical landscapes.

Assessment Points

Students are assessed at the end of each topic. Year 10 mock exams are in June, covering all the content taught since the start of Year 10.

Immerse Yourself

BBC Bitesize Geography






Tutor2U GCSE Geography Revision



KS4 Seneca Geography Revision



-  Develop Skills
-  Tests and Topics
-  Geography Revision at home

Students should use AQA Geography resources

- Tutor2U
- BBC bitesize
- Internet Geography

Test Your Knowledge with Quizlet...

Quizlet's Y10 Geography flashcards are a fantastic way to memorise relevant Geography terms to help you with your studies. Click on the icon below to start!



Praise and Reward

Our rewards system can be broadly split into four categories: classroom level, subject level, school level and privilege rewards. We'll focus on classroom and subject rewards here - for more information about our rewards schemes, please see our website.

CLASSROOM LEVEL REWARDS

Awarded for: working hard, taking risks and rising to a challenge, making mistakes and learning from them, helping others, and taking pride in the school community.

Rewarded by: praise postcards, positive phone calls to parents/carers, positive text messages home, and lesson based prizes.

SUBJECT LEVEL REWARDS

Reward scheme: Star of the Week, Curriculum Awards (Subject/School Way, Participation, Working with Pride, Embracing the Whole Curriculum), High Flyer, Extra Mile, Most Improved.

Rewarded by: names displayed on reward boards, certificates, social media posts.

Broadening Horizons

Our intent is that all students have a full understanding of how to develop themselves as well rounded citizens, maintain healthy relationships and understand how to keep themselves safe both online and in their day-to-day life.

We want all students to know what options are open to them in the future and understand the routes they have in order to progress on their life journey.

Year 10 students will be taking part in their physical fieldwork for their GCSE Geography course:

- Students will either visit Hornsea on the East Coast or Grindsbrook Clough, Edale, Hope Valley. The purpose of these visits is to collect primary data for their final GCSE exams and see first-hand the processes, landforms and management of these physical environment.
- Wider opportunities through residential, Camps International, charitable work and our Duke of Edinburgh provision

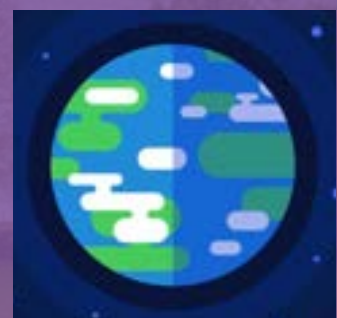


Internet Geography

This is a great source of information for revision. It also contains climate activist articles, and case studies that will give a helpful insight to the reality of climate change and current environmental projects going ahead to help our planet. Click on the logo to find out more.

Kurzgesagt - Need To Know

Planet Earth is this solid thing you are standing on right now. In your everyday life you don't really waste a thought about how amazing this is. A giant, ancient, hot rock. How did it come into existence and how big is it really? You will be surprised. The ground you are standing on is just a very, very small part of the big picture. Click on the logo to watch the video!



Careers

We run a series of 'Careers in the Curriculum' weeks in our school. For Geography, this week takes place in May. Students take part in activities to encourage them to think about how what they learn in the classroom can be applied in a number of future careers.

Conservation careers are a great option that you can look into! A leading definition of ecotourism is "responsible travel to natural areas that conserves the environment, sustains the well-being of the local people, and involves interpretation and education". Click on the logo below to find out more. Another useful way to think about ecotourism is sustainable tourism (which strives for social, cultural, economic and environmental sustainability), which takes place in natural areas and focuses on providing benefits for conservation and local communities.



The Geography Way

The Geography Way is followed and referred to in all lessons. The Geography Way has two main purposes. Firstly, to teach students the vital skills they need to achieve their full potential and gain the very best grades they can. Secondly, to teach students how each subject relates to the wider world, incorporating the life skills they will learn.



THE GEOGRAPHY WAY

WE EXPLAIN OUR REASONS USING CONNECTIVES
We explain both sides of the geographical argument when asked to

WE USE OUR OWN EXPERIENCES OF THE WORLD
We consider our global responsibilities

WE ANALYSE & interpret data & graphs to the BEST of our ability
We always make links to the question
We use diagrams & data to help with our learning
We learn & use geography key terms

We use maps & refer to locations
We use real world examples
We complete fieldwork safely & accurately

THE GEOGRAPHY WAY
THE SUBJECT WAYS

 **SUBJECT WAYS**

Have your say! ✨

At WPT we're always looking for feedback. If you have any thoughts/opinions on this Curriculum Newsletter, its content or the curriculum in general, please click on the title to fill out a short feedback form.