



Moving up to **Thrybergh Academy**

A helpful guide for students and parents

A VERY WARM WELCOME TO THRYBERGH ACADEMY

At Thrybergh Academy we want all students to leave able and qualified to play their full part in an ever-changing world, through an ambitious, creative and innovative curriculum. This means we want all of our students to start their lives equipped with not only qualifications, but also the skills and attributes that they will need to deal with the challenges of life beyond their time at Thrybergh Academy.



AS ADULTS. WE KNOW THAT OUR CHILDREN WILL SOMETIMES FACE ADVERSITY AND FRUSTRATION.

We aim to work in partnership - parents, students and teachers - to develop our children as resilient individuals with the determination to overcome barriers. For that reason, we say and do things in a certain way at Thrybergh Academy: "The Thrybergh Way". This allows us to promote the skills our children need to develop their independence, responsibility and resilience.

We promote a high challenge, low fear environment, where students are encouraged to have a go without fear of making a mistake. Children are encouraged to learn from their mistakes, as the most valuable achievements are the ones they have worked hardest for. Working together, the Thrybergh Way will help us ensure that our children leave ready to play their full role in the world.

Our vision is to be an Outstanding School, where all students have every opportunity to fulfil their potential; a school where our challenging and diverse curriculum and high quality teaching and learning, alongside our supportive pastoral care will secure success and achievement for all.

Our school is business-like and purposeful and our students want to learn. Smart dress, good attendance and punctuality underpin our ethos of high expectations.

We are 100% child centred and believe that all children have the right to a quality education, and we encourage, challenge and support every child.

**We strive for excellence
in everything we do.**

School Day

Time	Period
8.40 - 8.55am	Registration/Assembly
8.55 - 10.10 am	Period 1
10.10 - 11.25 am	Period 2
11.25 - 11.55 pm	Break 1
11.55 - 13.10 pm	Period 3
13.10 - 13.40 pm	Break 2
13.40 - 14.55 pm	Period 4

Students will receive timetables on the first day of term.

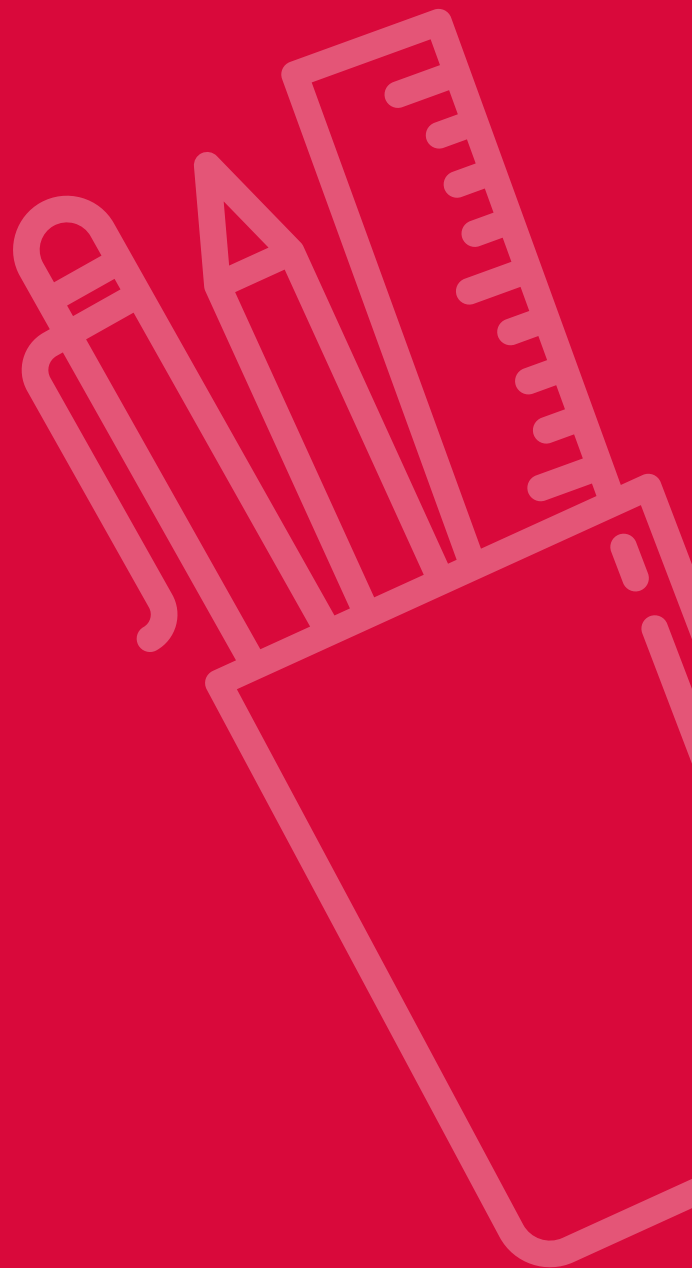
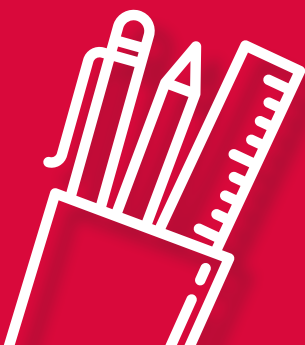
* Timings of the day are subject to change depending on Government & Wickersley Partnership Trust advice regarding COVID-19. Any changes will be communicated through our website: thrybergh.com



Equipment

We all recognise that we come to school to learn. In order to do this it is essential that you bring the correct equipment every day.

- Pencil Case
- Pen
- Pencil
- Ruler
- Coloured Pencil Crayons
- Calculator
- Compasses
- Protractor
- PE Kit
- Exercise Books / Folders



Attendance

To achieve their best, students must be on time and in school every day.

Students should only be absent if they have a really good reason for being away. Research shows that students with attendance of over 95% produce the best results at GCSE.

Therefore, being in lessons will help your child with their learning. Their attendance will appear in their school reports and is reported to colleges or employers when they leave school.

If there is a problem that prevents your child attending, there is always someone in school who you can talk to about it; your child's Form Tutor or Student Pastoral Manager.

THE ATTENDANCE TEAM WILL ALWAYS HELP YOU GET THE SUPPORT YOU NEED.



Illness & Medical Appointments

If your child is ill please telephone the Attendance Team on 01709 850 471 Option 1 before 9am the same day.

For absences known in advance, e.g. a medical appointment, a note must be provided. This should be presented to the attendance office before students sign out. Students should sign back in on their return. If your child is not at school we need to make sure they are safe. We will text or telephone you to ensure you are aware that they are not in school. It is our duty to investigate unexplained absences either through school or the Early Help Team.

Holidays In Term Time

We will NOT authorise holidays in term time. Any holidays taken will be classed as unauthorised absence from school.



Punctuality

If students arrive after 8.40am they will be registered as late.

We value punctuality for a number of reasons: it ensures that lessons start on the most positive footing, it avoids classroom disruption and it minimises wasted time for both students and teaching staff. Furthermore, it is an issue that many companies will consider when interviewing candidates for employment or training.

Behaviour & Expectations

We are all members of the school community and it is expected that everyone acts with consideration and courtesy for others at all times.

Code of Conduct

All students are responsible for their own behaviour in and out of the classroom. They should, in each lesson, take personal responsibility for their actions and follow the necessary sanctions placed on them by staff.

Student Classroom Conduct

- Attendance is crucial to academic achievement and students are expected to attend school every day.
- Punctuality is a direct example of a student who is on message and we expected all students to arrive to school and all lessons on time.
- Uniform is important in ensuring a calm and business like atmosphere in school and students are expected to attend school in full uniform without exception.
- Equipment ensures all students are ready to learn. We expect all students to arrive to lessons with the correct equipment: This is inclusive of PE kit, books and as a minimum a pen, pencil and ruler.
- All students are expected to line up calmly ready to enter lessons. This is to ensure a meaningful start to each lesson.
- Students must remove all outer clothing on entering the classroom and get out their equipment.
- All classroom teachers' instructions must be adhered to at the first time of asking.



- All requests from members of staff should be carried out without argument.
- No student should be disrespectful to, or show rudeness towards, anyone in school.
- During lessons, mobile devices must be turned off and in your bag. They may only be taken out when instructed to by a member of staff.
- Earphones or charging devices in lesson or anywhere on school site are not permitted. If seen they will be confiscated immediately and without exception.
- Bullying will not be tolerated.

Classroom Teacher Expectations

All classroom teachers are responsible for behaviour for learning within their own classroom. They should, in each lesson, take personal accountability for dealing with incidents and following through necessary consequences and restorative practice to ensure behaviour is approached with consistency.

The Thrybergh Way

We say and do things in a certain way at Thrybergh, referred to as 'The Thrybergh Way.'

The Thrybergh Way allows us all to promote the skills and attributes you need in order to develop independence, responsibility and resilience to have a happy and successful life. It defines who we are and what we stand for at Thrybergh Academy

The Thrybergh Way:

1. We believe in ourselves
2. We take responsibility for our choices and actions
3. We take risks and rise to a challenge
4. We are ambitious
5. We work hard and never give less than our best
6. We support others around us
7. We take pride in our school community
8. We are prepared to make mistakes and learn from them
9. We are equipped to learn
10. We are respectful and we listen to others
11. We take pride in our appearance
12. We are proud of our achievements

Working together in this way will help us all to ensure that Thrybergh students leave school able and qualified and ready to play their full part in the world.



Students are proud to be part of the school and talk very positively about the Thrybergh Way

School Uniform

- Clip on tie for all
- White shirt.
- Black V neck jumper or cardigan with school logo.
- Footwear must be plain black leather/synthetic leather with no stripes or logos.
- Make-up should be discreet and minimal with no false eyelashes or false finger nails.
- Extreme haircuts are not allowed.

It is the School's discretion as to what constitutes 'extreme' but usually involves shaven heads, multi-coloured or unusually coloured hair.

- Jewellery must be kept to a minimum; no more than one small earring, sleeper or stud in each ear. No other facial and body piercings are allowed on school site.

Gold, silver and bronze award pin badges should be worn as part of school uniform.

** The uniform displayed on promotional photos is not the new uniform which shall be worn from September 2021. Uniforms for September can be purchased from Pinders Schoolwear and JohnnyD Schoolwear. Please contact them to ensure you are purchasing the correct uniform.*

Please note: Protective clothing is required when students use the school workshop and other craft facilities and these will be provided by the school.



PE Kit

The compulsory PE kit consists of:

- Thrybergh polo shirt/t-shirt
- 1/4 zip top (optional)
- Black socks
- Black shorts or tracksuit bottoms
- Sports trainers
- Jewellery must never be worn during games or PE lessons.
- Hair should be tied back.
- Please put your child's name on to items of PE kit



Thrybergh Extra

Taking part in extracurricular activities is a vital part of school life and at Thrybergh we offer a fantastic range of clubs to all students.

These activities provide students with experiences they will remember in the future and also build invaluable life skills such as determination, resilience and confidence. It's also a great way to make new friends and work in teams.

As part of a team, you will be given the opportunity to represent school at events and fixtures. All our students are expected to show the same high standards out of school, as they do in school, both in behaviour and uniform.

A lot of hard work goes into building great teams and regular participation and practice is expected in order to be selected for such events. In order to enable all students to take part in extracurricular activities, we offer a full timetable of clubs across the week, including breaks and after school.

Here are just a few of the clubs you could take part in:

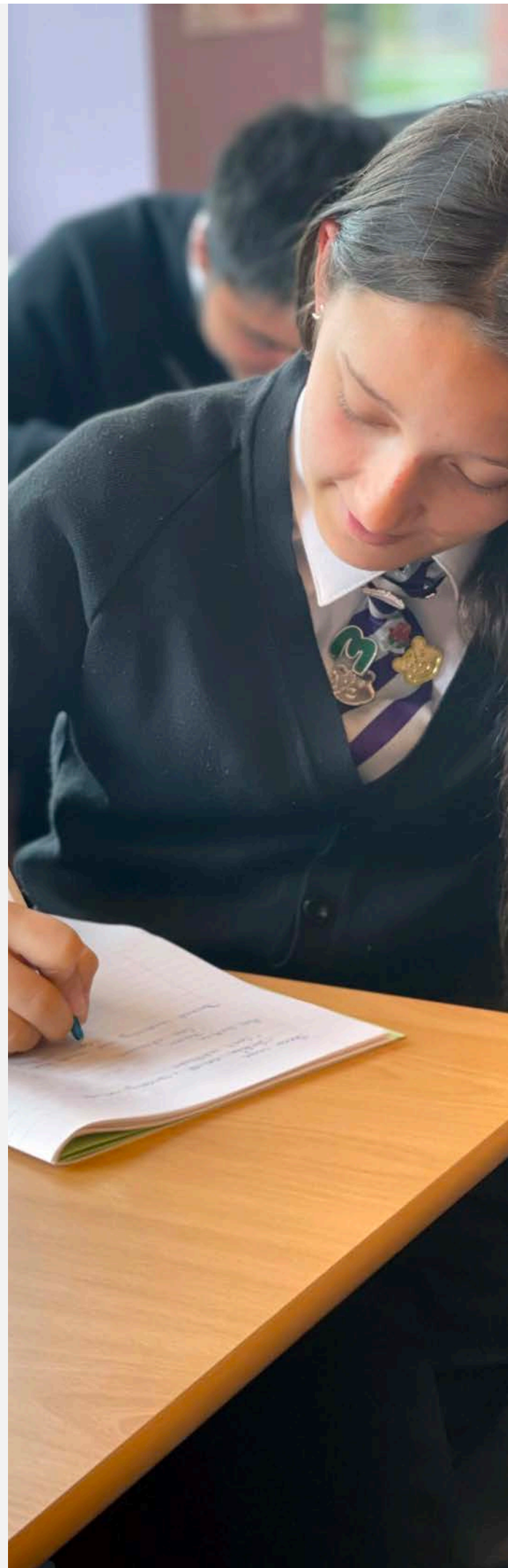
- Football
- Netball
- Dance
- Badminton
- Climbing
- Athletics
- Rounders
- Cricket
- Drama
- ICT
- Art & Photography
- Science club
- Games



Thrybergh Pledges

At Thrybergh Academy we believe that we should send our students out into the world able and qualified and with basic life skills that will last a lifetime.

These activities provide students with experiences they will remember in the future and also build invaluable life skills such as determination, resilience and confidence. It's also a great way to make new friends and work in teams.





As part of a team, you will be given the opportunity to represent school at events and matches.

All our students are expected to show the same high standards out of school, as they do in school, both in behaviour and uniform.



A lot of hard work goes into building great teams and regular participation and practice is expected in order to be selected for such events. In order to enable all students to take part in extracurricular activities, we offer a full timetable of clubs across the week, including breaks and after school.

Active Citizenship - Preparing you for life in modern society.

Life Skills - Equipping you to deal with a range of life experiences.



British Values - Equipping you for life in modern Britain.

Data

Target Setting

Students complete baseline tests in English, Maths and Science. We use these scores, alongside data we receive from Primary Schools to set targets in Year 7 and 8 in all subjects.

These targets are the levels we expect students to achieve in each subject. They are realistic, so every student is capable of achieving their target; they are also aspirational, encouraging students to strive to attain the best possible level.

Can Do Statements

- **Entry Level:** Statements that all students should meet with ease; simple skills and knowledge within a subject. This could be Expected knowledge from previous years.
- **Expected:** Statements that a student in that year **MUST** meet, on a regular basis, if they are to be deemed on track to make expected progress. They are **the non-negotiables**.
- **Greater Depth:** The aspects of the curriculum that empower students to demonstrate what they know, and are able to do, beyond what is expected.

Effort

Alongside attainment data, students receive an Effort Grade in each subject from their teacher. Effort is graded as: Excellent, Coasting, Requires Improvement or Poor. This gives you an insight into your child's behaviour and attitude in lesson.

All students are capable of achieving 'Excellent' for effort, regardless of ability. Students are also given an 'Effort Rank' - this is a clear indicator of how hard your child is working relative to other students in the year group.

For example, in a year group of 100 students, a student with an "Effort Rank of 1 out of 100" has Excellent effort in all of their subjects. If there are 30 students with Effort Rank 1, a student with "Effort Rank of 31 out of 200" will have mostly Excellent effort with one Coasting effort. "Effort Rank 100 out of 100" indicates that effort must improve in all subjects. Students should always strive to be top of the Effort Rank.

Data Collections & Full Reports

You will receive a Data Report for your child three times per year.

Here, you will be able to see how many objectives they have mastered successfully. Some of the objectives that your child has not yet achieved will be included in the report as a subject specific target. These targets are important skills or vital areas of knowledge, which will be central to your child making progress in each subject.

In Y9 - Y11, you will receive information about your child's current attainment and the predicted grade submitted by their teacher for the end of Y11. Personalised subject specific targets will indicate what your child needs to do to improve their attainment.



Rewards

Gold, Silver & Bronze Awards

Our students wear their Gold, Silver and Bronze badges with pride and it's become a Thrybergh tradition to wear these on ties as a marker of the many wonderful achievements.

Badges are awarded after each Data Collection and the criteria for these takes account of:

- Effort
- Attendance
- Punctuality

At the end of each year, we identify success across all of the data collections with our Bronze, Silver and Gold Rewards Pyramid where we celebrate the achievements of those students who consistently meet the highest standards.

The names of all of our award winners go up on our corridor displays to celebrate their success.





Thrybergh Pledge Awards

As part of our new whole school initiative to promote Life Skills, Active Citizenship and Cultural Experiences through Enrichment, we will be celebrating the achievements of our students who have completed parts of The Thrybergh Pledge.



There are three levels of award available starting with Bronze, through to Silver and finally Gold and the Pledge tasks there are a separate set of Thrybergh Pledge tasks for KS3 and KS4. Thrybergh Pledge completers will receive our new Pledge Badges as part of our Thrybergh Pledge Celebration event.



Rewards

Effort Ranking System

The effort rank will be displayed around school for students who have been ranked number 1 for the longest amount of time. In addition students who are number 1 in the effort rank will receive letters and phone calls / texts home. Students who are recognised for outstanding effort and improved effort have photo rewards that are sent home to parents.

Cause for Praise (CFP)

Our simplest and possibly most effective method of praise is the CFP. When a student has gone above and beyond the usual high expectations, staff complete a Cause For Praise which is shared with Form Tutors, HOY and, as often as possible, parents.





Rewards



Subject Awards

Each term, teachers across school choose a student from each of their classes who is deserving of a 'Subject Award.' These can be won by any student in Y7 – Y11 who consistently goes the extra mile in their subject.

Awards Assemblies

The Awards Assemblies take place at the end of each academic year and celebrate the success of students from year groups 7-10. The assemblies celebrate the achievements made by our students over the course of the last 12 months both in and out of school; in particular those who have excelled in subject areas, improved their effort or demonstrated outstanding effort consistently. The assemblies also celebrate attendance and hard work.

Passport to the Prom

In Year 11 students have a 'Passport to the Prom' which they use to record progress on a weekly basis. Students who are successful in meeting targets, academic achievement, consistent effort and attendance can win rewards specifically linked to the prom at the end of the school year.





Thrybergh Pledges

The Thrybergh Pledge is designed to make students more resilient, independent, confident and determined.

It is divided into the following three categories, with examples of some of the tasks you may carry out.

	KS3 PLEDGES	BRONZE	SILVER	GOLD
ACTIVE CITIZENSHIP 	WE BELIEVE IN OURSELVES	WRITE DOWN A LIST OF YOUR STRENGTHS AND AREAS FOR DEVELOPMENT AND PRESENT IT TO YOUR FORM OR A TRUSTED ADULT	TAKE PART IN THE THRYBERGH LEADERSHIP PROGRAMME	TAKE A LEADERSHIP ROLE IN FORM TIME OR IN AN ASSEMBLY
	WE TAKE RISKS AND RISE TO A CHALLENGE	LEARN A NEW SKILL. E.G. LEARN A GREETING IN FIVE DIFFERENT LANGUAGES. LEARN TO PLAY A NEW MUSICAL INSTRUMENT OR TAKE UP A NEW HOBBY. TRY A NEW EXTRA CURRICULAR ACTIVITY. GET OUT OF YOUR COMFORT ZONE & DO SOMETHING DIFFERENT.	PARTICIPATE IN TWO OR MORE ENRICHMENT OPPORTUNITIES WITHIN OUR LOCAL AREA OR IN SCHOOL	WRITE A FORMAL LETTER TO A KEY ADULT IN OR OUT OF SCHOOL TO CAMPAIGN FOR CHANGE
	WE ARE AMBITIOUS	RESEARCH THE LABOUR MARKET FOR A SPECIFIC CAREER YOU ARE INTERESTED IN AND FIND OUT ABOUT THE SKILLS, QUALITIES AND RESPONSIBILITIES OF A PERSON IN THAT PROFESSION	COMPLETE A VISIT TO A LOCAL EMPLOYER AND INTERVIEW A PERSON FROM A POSSIBLE CAREER CHOICE. LISTEN TO A GUEST SPEAKER OR FIND OUT MORE ABOUT A CAREER FROM A FAMILY MEMBER	GO ON A SCHOOL TRIP AND COMPLETE A DIARY LOG, EXPLAINING WHY THE TRIP HAS INSPIRED YOU TO VISIT OTHER CULTURAL HOTSPOTS
	WE TAKE PRIDE IN OUR SCHOOL COMMUNITY	ATTEND A SCHOOL EVENT AND/OR REGULARLY ATTEND ONE OF THE AFTER SCHOOL CLUBS OR OFFER THROUGH SCHOOL. SUPPORT AN EVENT AS A LEADER AMBASSADOR	TAKE PART IN AN ENTERPRISE PROJECT OR SCHOOL IMPROVEMENT PROJECT	REPRESENT THRYBERGH IN A SPORTING EVENT, COMPETITION OR PRODUCTION AND/OR RAISE MONEY FOR A CHARITY INDEPENDENTLY
LIFE SKILLS 	WE WORK HARD	ACHIEVE 20 PRAISE POINTS IN A SINGLE TERM AND/OR WIN A CURRICULUM AWARD	SIGNIFICANTLY IMPROVE YOUR EFFORT BETWEEN DATA COLLECTIONS AND/OR ACHIEVE EFFORT RANK NUMBER 1	ACHIEVE EFFORT AVERAGE OF 3.8+ OVER AN ACADEMIC YEAR
	WE TAKE RESPONSIBILITY FOR OUR CHOICES AND ACTIONS	CREATE AND USE A REVISION RESOURCE TO IMPROVE YOUR ATTAINMENT IN A SUBJECT	KEEP A SLEEP, EXERCISE OR HEALTHY EATING DIARY TO EVALUATE AND IMPROVE YOUR LIFESTYLE CHOICES	SHOW INDEPENDENCE IN THE WIDER WORLD E.G. CREATE AN ACTION PLAN
	WE ARE PREPARED TO MAKE MISTAKES AND LEARN FROM THEM	ANALYSE A MISTAKE YOU HAVE MADE BY: 1. WHAT WERE YOU TRYING TO DO? 2. WHAT WENT WRONG? 3. WHY DID IT GO WRONG? 4. WHAT WILL YOU DO DIFFERENTLY NEXT TIME?	ACHIEVE 6 CFFS FOR LEARNING FROM YOUR MISTAKES AND/OR ACHIEVE OR MAINTAIN YOUR EFFORT AVERAGE ON 3 CONSECUTIVE DATA TRACKS	WIN A SUBJECT AWARD AT THE END OF YEAR AWARDS ASSEMBLY
	WE ARE EQUIPPED TO LEARN	ALWAYS CARRY THE RIGHT EQUIPMENT AND DISPLAY A POSITIVE ATTITUDE FOR LEARNING - SEEK SUPPORT IF NEEDED	GO ON AN EDUCATIONAL VISIT THROUGH SCHOOL OR INDEPENDENTLY OUTSIDE OF OUR LOCAL AREA E.G. NATIONAL HISTORY MUSEUM, THE DEEP OR SCIENCE AND INDUSTRY HERSON OR TAKE A VIRTUAL TOUR AND CREATE A FIVE-FIVE OUT	UNdertake FIRST AID TRAINING IN OR OUTSIDE OF SCHOOL E.G. RESTART A HEART OR ST JOHN'S AMBULANCE
BRITISH VALUES 	WE SUPPORT OTHERS AROUND US	DO SOMETHING THAT BENEFITS YOUR LOCAL COMMUNITY THROUGH A RANDOM ACT OF KINDNESS - EVIDENCE THIS WORK	TAKE PART IN FUNDRAISING FOR A CHARITABLE EVENT. REGULARLY HELP FAMILY MEMBERS WITH DAILY CHORES	ORGANISE A FUND RAISING EVENT INDEPENDENTLY OR IN A TEAM AND OR REGULARLY VOLUNTEER FOR A PROJECT OUTSIDE O SCHOOL
	WE ARE PROUD OF OUR ACHIEVEMENTS	IDENTIFY 5 THINGS ABOUT YOURSELF THAT YOU ARE PROUD OF AND SHARE THEM WITH YOUR FORM GROUP OR TRUSTED ADULT	RESEARCH SOMEONE WHO HAS EITHER SHOWN A TALENT OR OVERCOME ADVERSITY IN ONE OF THE 3 THINGS YOU ARE PROUD ABOUT YOURSELF	TAKE A LEADERSHIP ROLE IN A PRESENTATION, PROJECT OR EXTRA-CURRICULAR CLUB. ACHIEVE A REGIONAL AWARD IN YOUR CHOSEN HOBBY / JOB ACTIVITY
	WE ARE RESPECTFUL AND WE LISTEN TO OTHERS	USE AN IDEA FROM A CLASSMATE TO IMPROVE YOUR WORK. BE POLITE. OPEN DOORS. BE A FRIEND TO SOMEONE IN NEED	EXERCISE YOUR RIGHT TO FREE SPEECH BY CONTRIBUTING TO YOUR SCHOOL COUNCIL OR GROUP OUTSIDE OF SCHOOL	RESEARCH A DIFFERENT FAITH OR KEY HISTORICAL EVENTS THAT HAVE OCCURRED IN YORKSHIRE, AND PRESENT YOUR FINDINGS TO YOUR FORM GROUP OR TO YOUR SOCIAL STUDIES CLASS
	WE TAKE PRIDE IN OUR APPEARANCE	DEMONSTRATE INDEPENDENCE BY WASHING AND IRONING YOUR SCHOOL UNIFORM OR CLEANING YOUR SCHOOL SHOES	ACHIEVE A SCHOOL REWARD SUCH AS A SPECIAL MENTION OR FACULTY MENTION FOR YOUR HIGH STANDARDS IN UNIFORM AND EQUIPMENT	ACHIEVE AT LEAST ONE PIN BADGE TO COMPLEMENT YOUR SCHOOL UNIFORM

THE Thrybergh Way

Learn
Believe
Succeed
Together

WE BELIEVE IN OURSELVES

WE TAKE
RESPONSIBILITY
FOR OUR CHOICES & ACTIONS

WE TAKE RISKS & RISE TO A CHALLENGE

WE ARE AMBITIOUS

WE ARE PROUD OF
OUR ACHIEVEMENTS

WE ARE RESPECTFUL
& WE LISTEN TO OTHERS

WE TAKE
PRIDE
IN OUR
APPEARANCE

WE ARE PREPARED TO MAKE MISTAKES
& LEARN FROM THEM

WE ARE EQUIPPED TO LEARN



WE WORK
HARD

WE SUPPORT
OTHERS
AROUND US

WE TAKE PRIDE IN
& LOOK AFTER
OUR SCHOOL
COMMUNITY

